

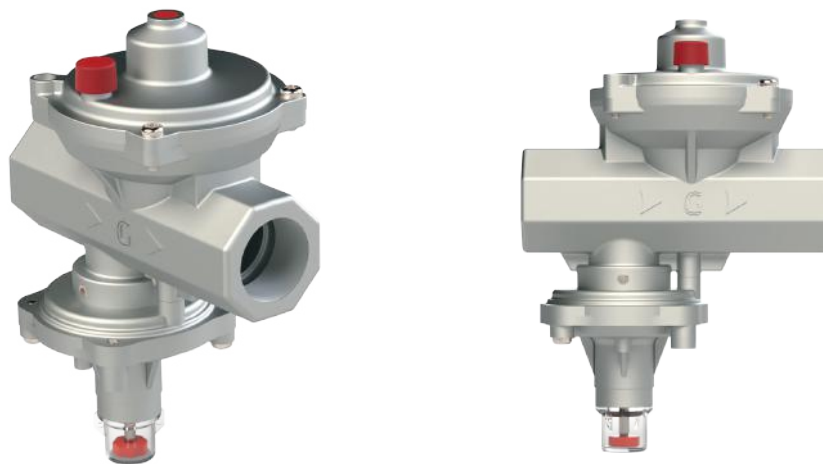
**GTR-MX** SERIES

# GTR-MX

## INTRODUCTION

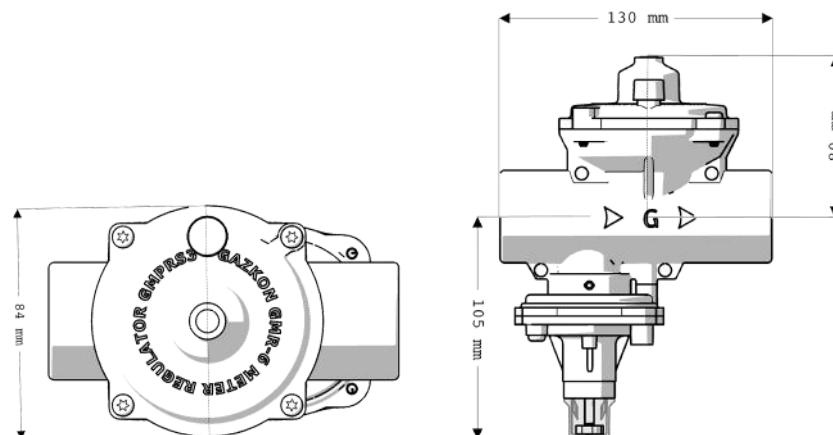
The GTR series regulators are single-stage products designed for residential applications and operate using a lever system. The regulator is directly mounted for use at the inlet of combi boilers.

The regulator is compatible with natural gas, LPG, propane, and city gas. Its compact design provides both ease of installation and space-saving advantages.



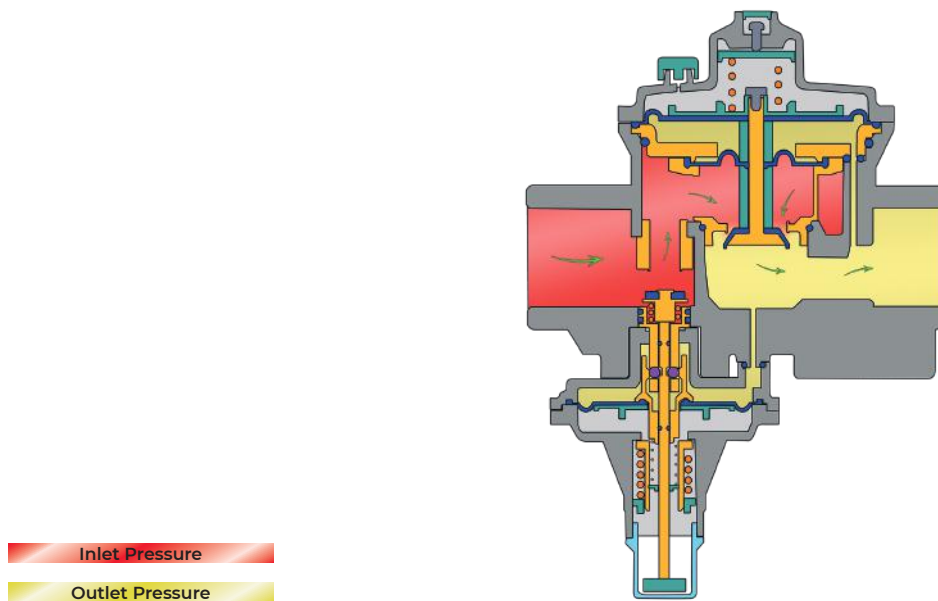
Inlet Pressure	30 - 500 mbar
Outlet Pressure	8 - 30 mbar
AC / RG	10 / 20
Ambient Temperature	-20°C to +60°C
Capacity Range	Max. 50 m <sup>3</sup> /h

## DIMENSION AND WEIGHTS



## OPERATING PRINCIPLE

The regulator has a simple structure consisting of two diaphragms, a spring, and a valve. The output pressure is sensed by the diaphragm and balanced to the desired value by the spring. The output pressure can be increased or decreased using the output pressure adjustment screw. The regulator's output pressure is limited by a "sudden shut-off valve" (SSV) mechanism. When the output pressure exceeds the set values, the regulator cuts off the flow. However, it needs to be reset by an operator once it returns to normal values.



## MATERIALS

**BODY AND HEADS** Die-Cast Aluminum

**INTERNAL PARTS** Brass/Plastic

**DIAPHRAGM NITRILE** Nitrile Rubber

## COMMISSIONING

- Before commissioning the regulator, ensure that the pipeline connections are made correctly.
- The inlet and outlet valves should be closed.
- Slowly open the inlet valve, remove the transparent cover on the SSV section of the regulator, pull the pin inside to allow gas to enter, and release it.
- The regulator will automatically adjust itself once gas enters it.
- Slowly partially open the outlet valve and wait for the line to fill. Then, fully open the outlet valve.